

GHOST RECON WILDLANDS CHEATHAPPENS TRAINER GUIDE

The purpose of this guide is to help people get the trainer working with the game.

Step 1:

Launch the trainer.

The latest trainer is located here:

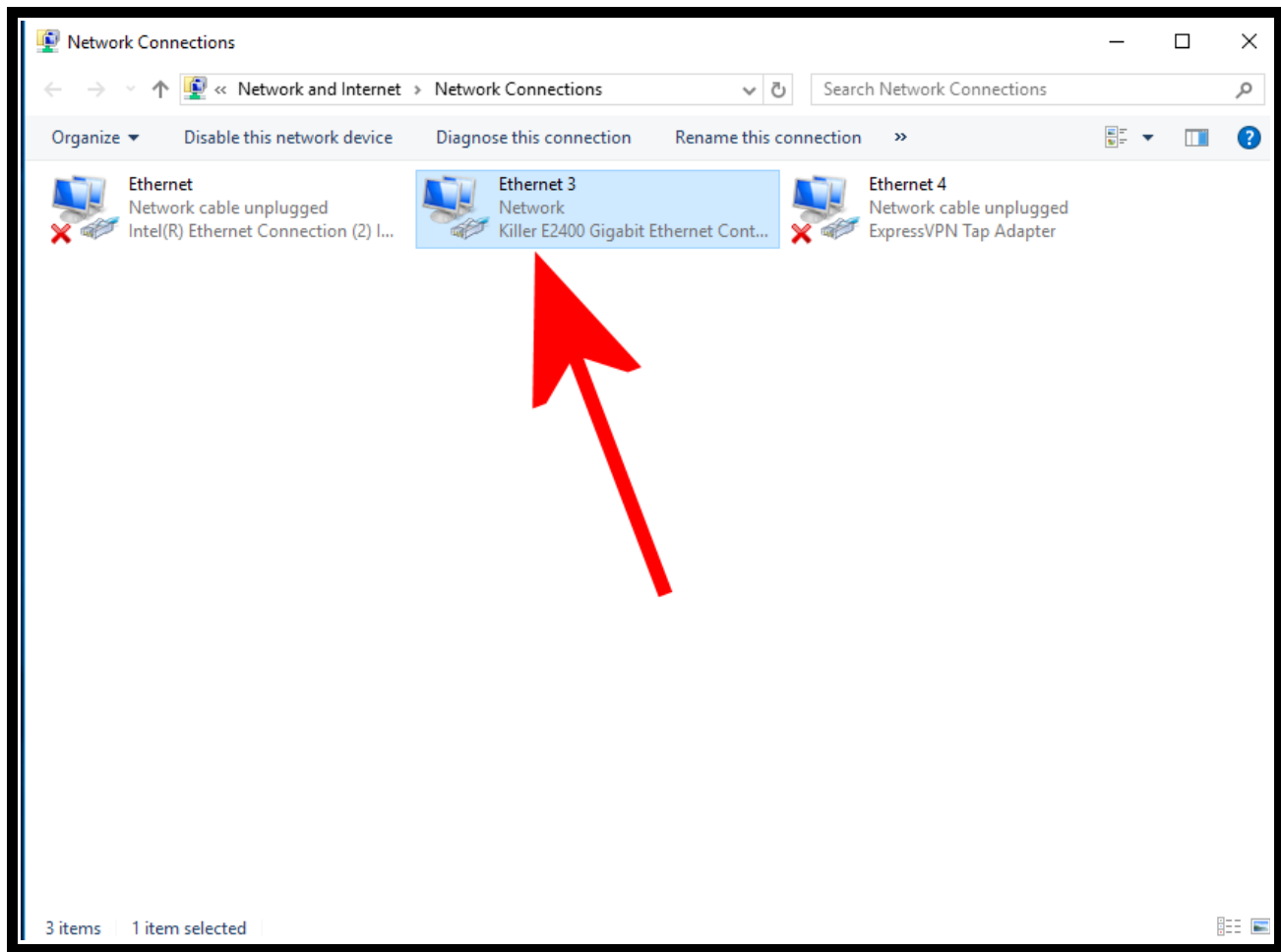
https://www.cheathappens.com/21238-PC-Tom_Clancys_Ghost_Recon_Wildlands_cheats

You will likely need to have your internet ON, or the trainer wont authenticate.

Check here:

Control Panel\Network and Internet\Network Connections

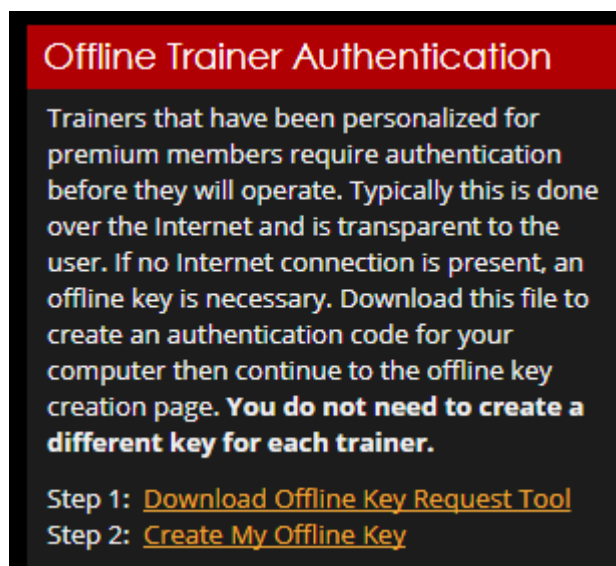
And make sure your internet is not showing ***Disabled***, but says ***Network***:



If you have your internet disabled already, but have an official *cheathappens offline key* in the same directory as your trainer, then the trainer will launch, even if there is no internet. You can find how to get your offline key here:

https://www.cheathappens.com/trainer_troubleshooting.asp

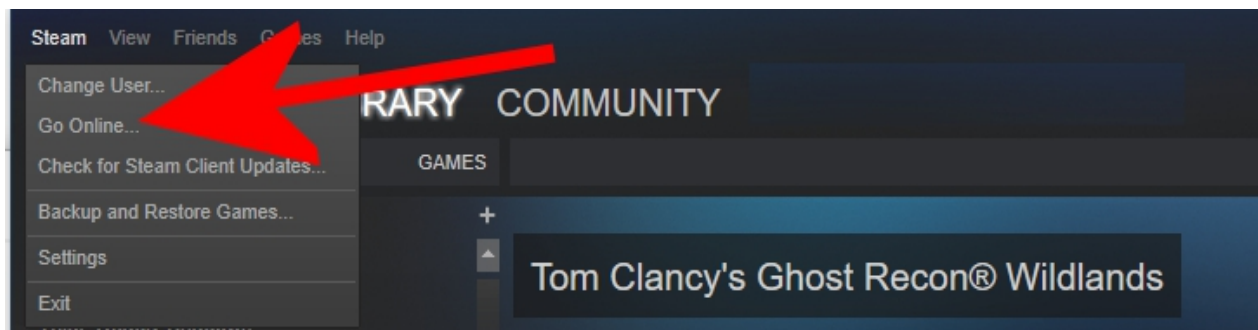
Look for the section like this, and follow the steps:



Step 2:

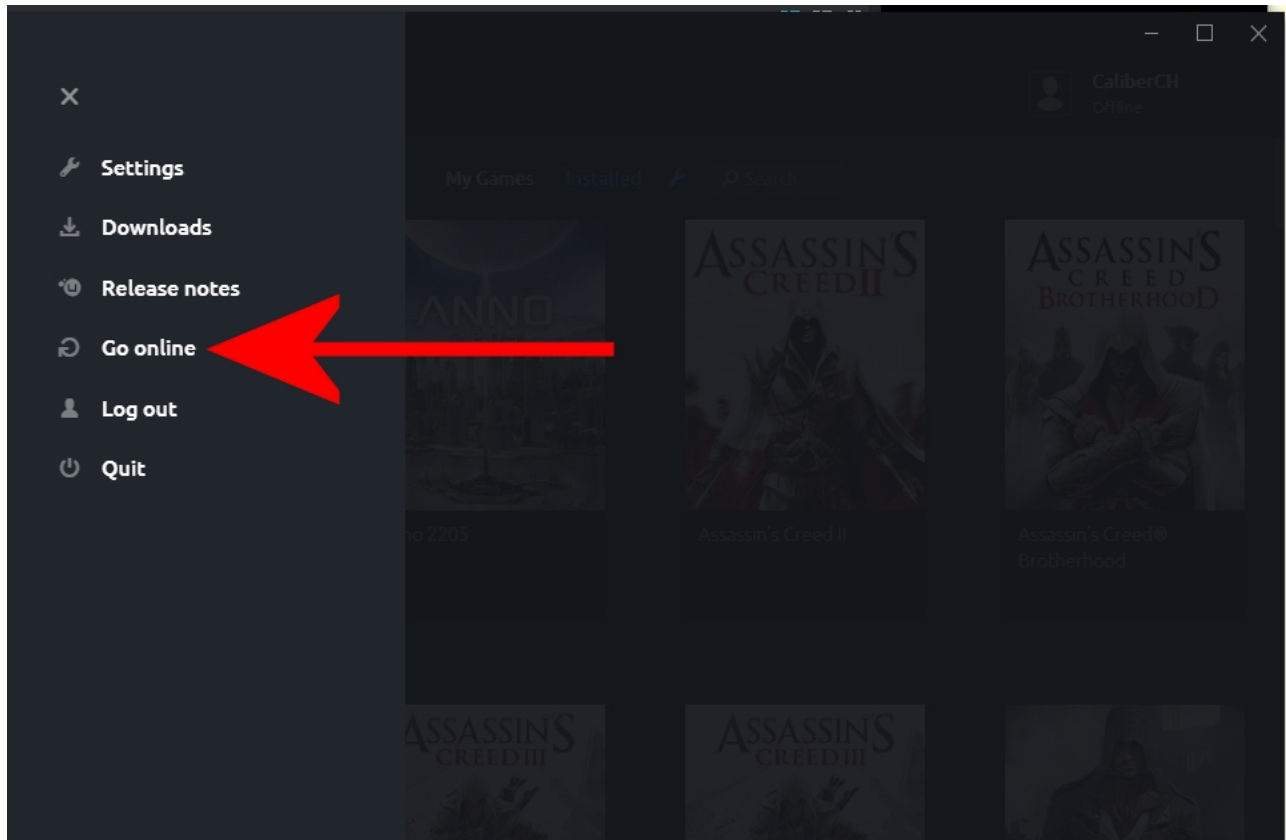
Launch *Steam* (if you have the game on steam) if it's not already started. Also, run *Uplay* if it's not already started.

In settings of Steam, set Steam to **OFFLINE** mode. When you do that, it will look like this in the menu:



If it still says "*Go Offline...*" then you are **NOT Offline**. It should look like the picture above.

In Uplay, you click the little box of lines to the left of GAMES to open up the settings. Set Uplay to **OFFLINE MODE**. When you do that you will see that it looks like this:

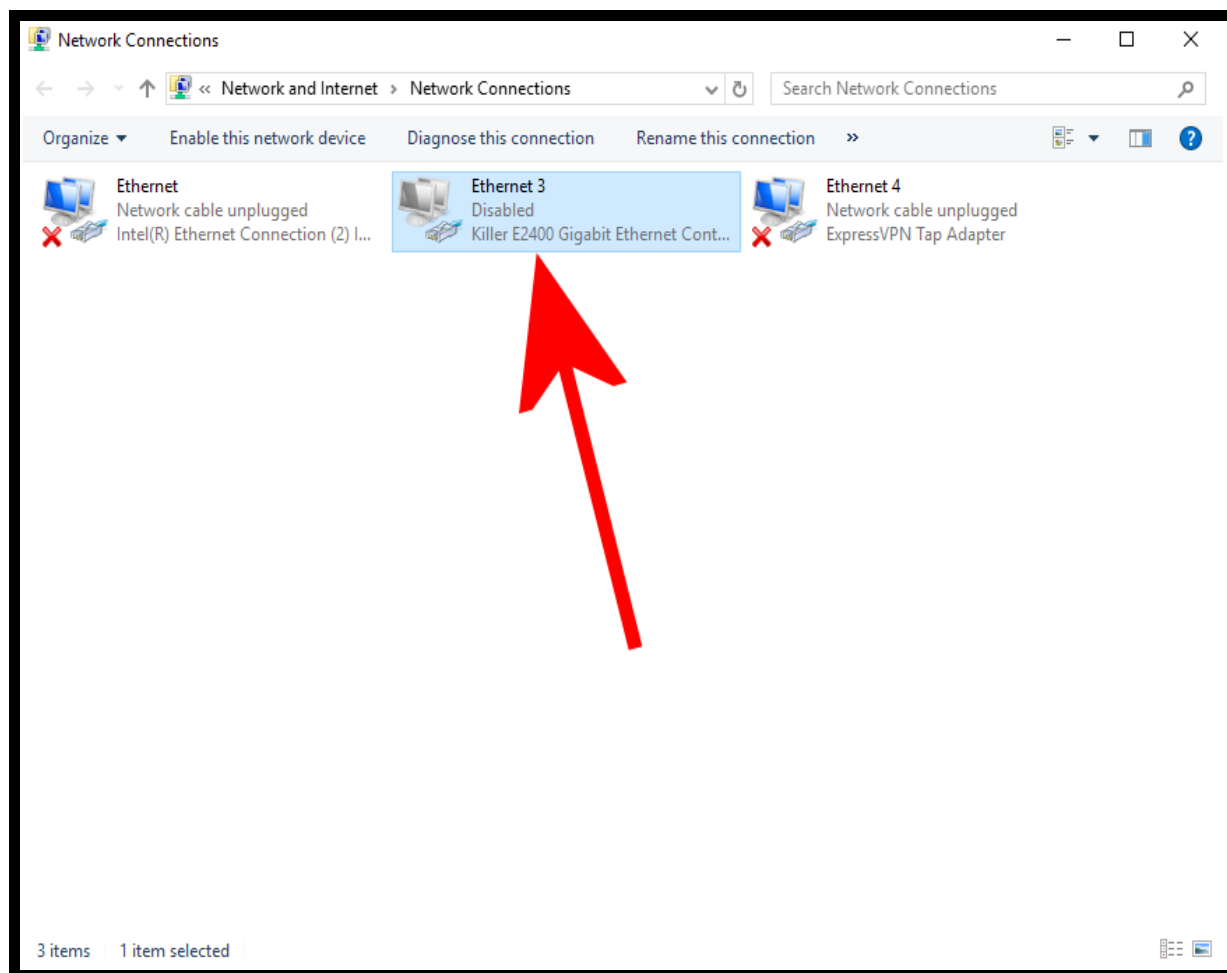


If it still says “*Go Offline...*” then you are **NOT Offline**. It should look like the picture above.

So now you have the trainer running, and both *Steam* and *Uplay* are in *offline* mode. Next you can either *unplug your internet* connection to your computer or go here:

Control Panel\Network and Internet\Network Connections

And then right click your internet connection and click ***Disable***. If your internet is disabled, it should look like this:

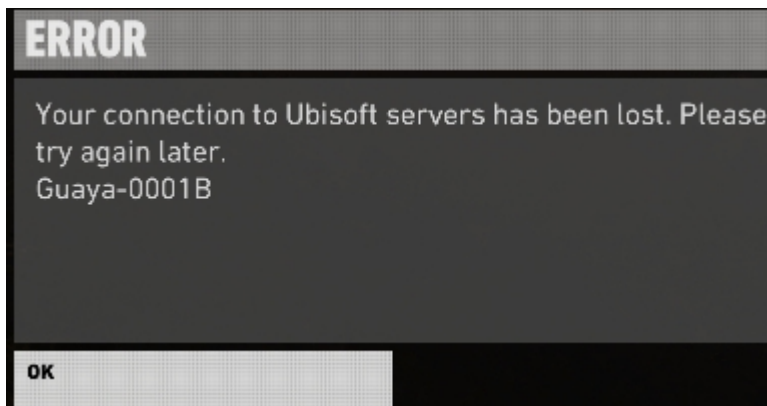


So now, we have the *trainer running*, *Steam* and *Uplay* are in *offline mode*, and there is *no internet connection*.

Step 3:

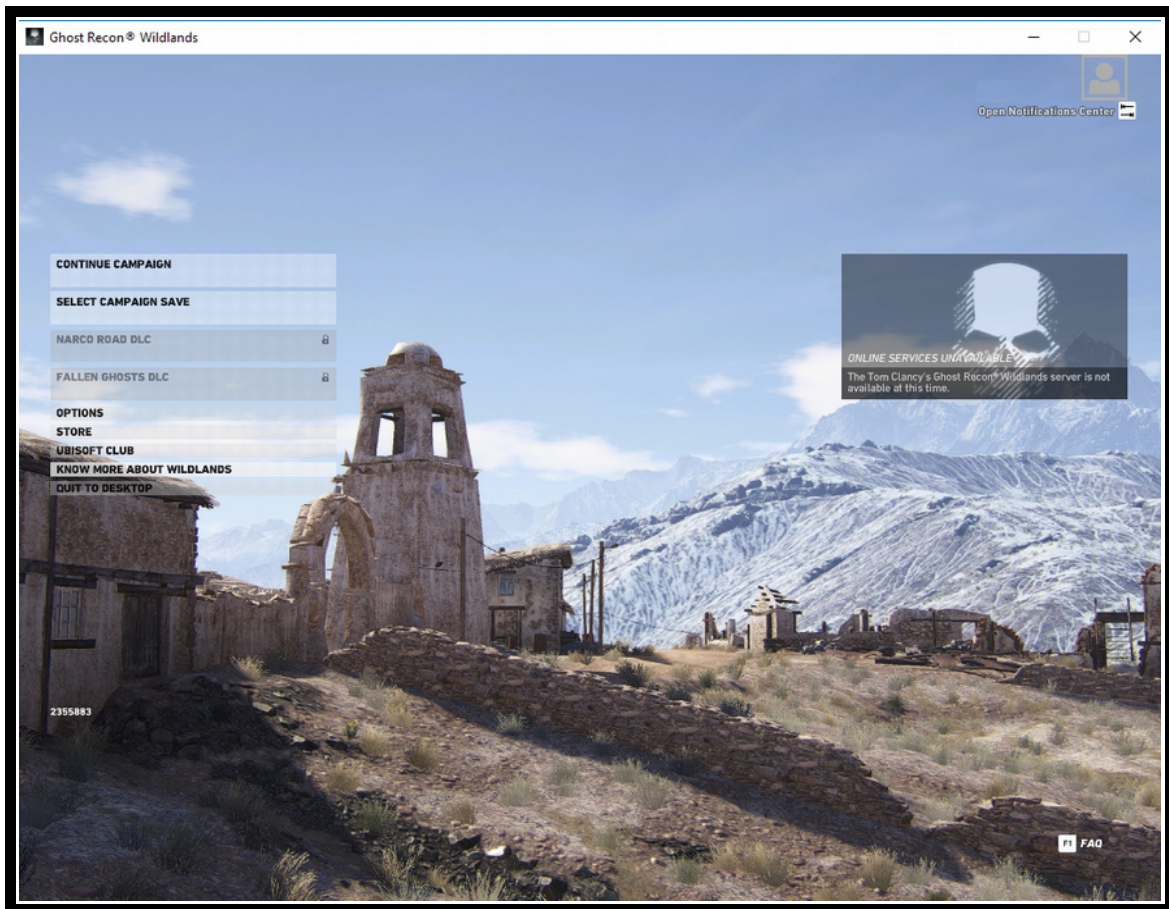
Launch the game. You can now ***launch the game***. It will take several seconds for the game to launch but eventually you will see the screen that says ***PRESS ANY KEY***.

Press any key and then you will see the following ***ERROR***:



If you ***don't*** see this error, then you are ***online***, and likely the ***trainer won't work*** or the game will close when the trainer is activated. This 'error' is actually a good thing, indicating that the ***game is not online***, and that you will be able to use the trainer.

Click **OK** and you are at this next screen:



DO NOT CLICK CONTINUE CAMPAIGN HERE YET!

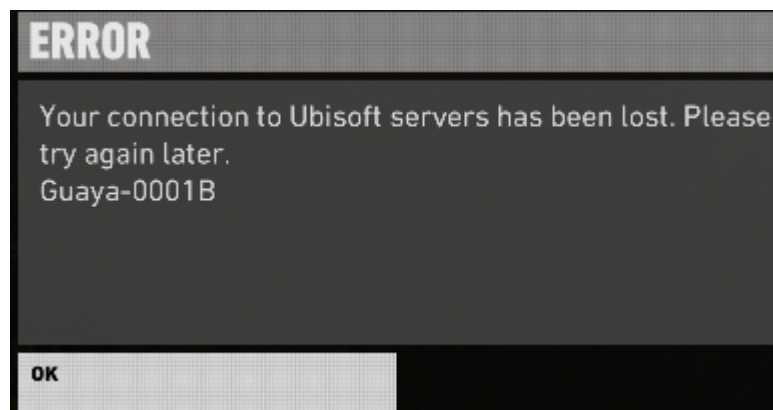
Step 4:

This is where we Activate the trainer.

Press F1 to activate the trainer. After several seconds you will hear the trainer say, ***“Activated”***.

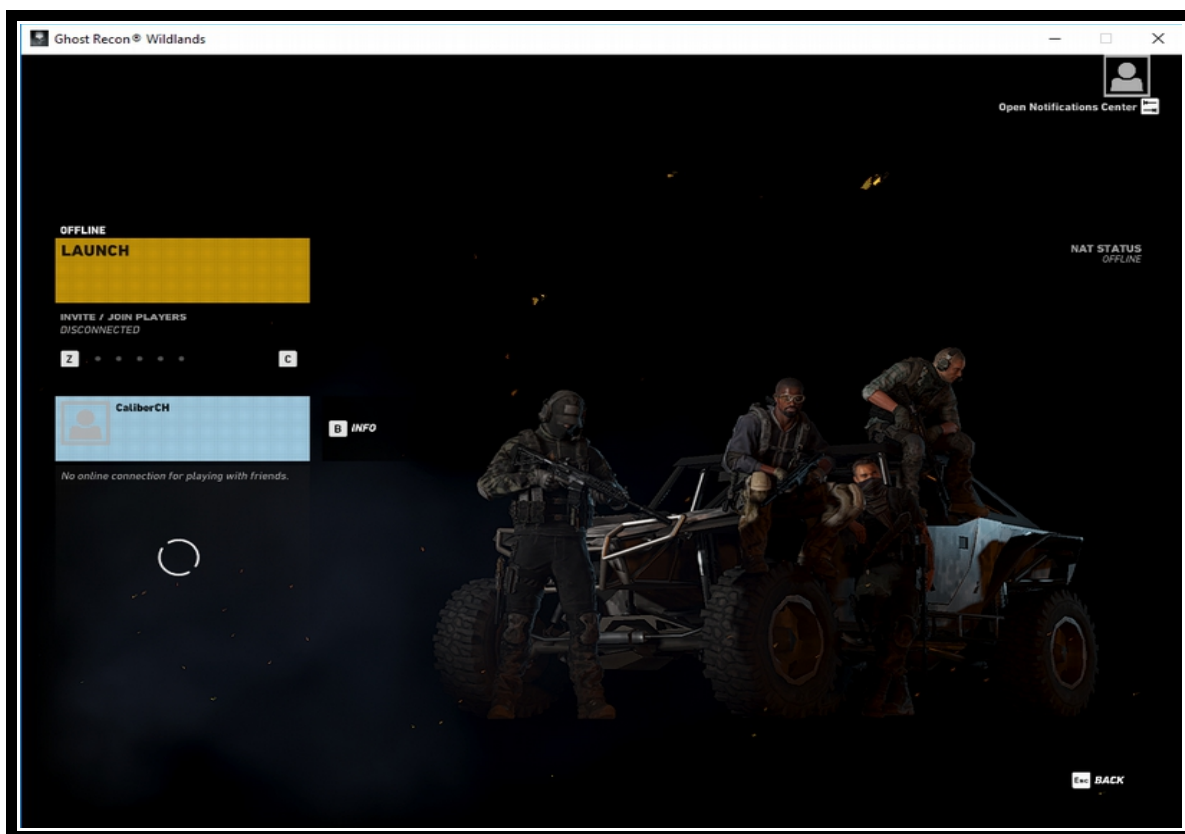
Click ***Continue Campaign*** back in the game.

Again you will see this error:



If you don't see this error, then you are online, and likely the trainer won't work or the game will close when the trainer is activated. Again, this 'error' is actually a good thing, indicating that the game is not online, and that you will be able to use the trainer.

Press **OK** and you will see the following screen:



Step 5:

Click ***LAUNCH*** and the game will continue on to load into your current Save, and then you can use the options in the trainer in the game.

Final Notes:

- 1) If you try to activate the trainer anywhere else than the ***continue campaign*** screen, it will likely crash the game
- 2) If you try to turn the ***internet back on*** once you are playing, the game and trainer will both crash
- 3) If you don't have Steam off, Uplay ***off***, and the internet ***off***, likely the game will crash trying to use the trainer
- 4) Crash at activation generally means you ***didn't activate at the right screen***, the ***internet is on***, or Steam or Uplay are both/either still in ***online mode***.